

HEALTHCARE NURSE UNIFORM

Name of material: POLY TWILL SHIRTING

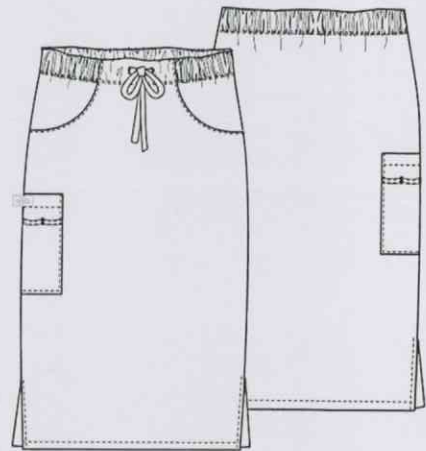
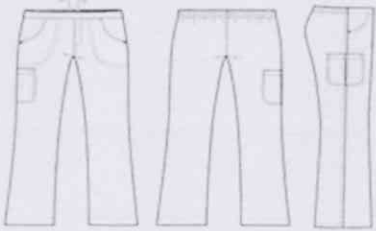
ROYAL BLUE PANTS/ SKIRT OR DRESS

ROYAL BLUE TOP

APRON OR LAB COAT – WHITE COTTON MATERIAL

ROYAL SKIRT: Missy fit, Drawstring, Elastic waistband, 2 rounded pockets, 1 large side patch pocket, Side slit, Length: 3' below the knee for dress and skirt.

ROYAL BLOUSE: Y-Neck with light blue piping, ½" waist band with light blue piping, Signature bow meets both piping at the side, 2 roomy pockets, 2 in 1 signature pocket, Invisible three part accessory pockets



HEALTHCARE NURSE UNIFORM

Name of material: POLY TWILL SHIRTING

ROYAL BLUE PANTS/ SKIRT OR DRESS

ROYAL BLUE TOP

APRON OR LAB COAT – WHITE COTTON MATERIAL

ROYAL SKIRT: Missy fit, Drawstring, Elastic waistband, 2 rounded pockets, 1 large side patch pocket, Side slit, Length: 3' below the knee for dress and skirt.

ROYAL BLOUSE: Y-Neck with light blue piping, ½" waist band with light blue piping, Signature bow meets both piping at the side, 2 roomy pockets, 2 in 1 signature pocket, Invisible three part accessory pockets

